

EBERHARD KARLS
UNIVERSITÄT
TÜBINGEN



Collections

MUSEUM OF THE UNIVERSITY OF TÜBINGEN MUT



WWW.UNIMUSEUM.DE



4th Edition

Friends of the MUT

INFO

Freunde des MUT. Gesellschaft zur Förderung des
Museums der Universität Tübingen e.V.

c/o MUT

Schulberg 2

72070 Tübingen

Tel: 07071-2976437

Fax: 07071-2935289

E-Mail: freunde@museum.uni-tuebingen.de

www.unimuseum.de

ANNUAL MEMBERSHIP FEES

Personal Membership: 50 €

Married Couples: 70 €

Students: 15 €

Institutional members: 300 €

CONTRIBUTIONS AND DONATION ACCOUNT

Freunde des MUT e.V.

Kreissparkasse Tübingen

IBAN DE94 6415 0020 0004 3953 64



The widely opened doors of the cabinet in the cover image invite us to discover the collections of the University of Tübingen. Additionally, the concept of the MUT as the central institution of the Tübingen University Collections is symbolized by many collection cabinets in a single cabinet.

© Peter Neumann

The Collections of the University of Tübingen

Founded in 1477, the University of Tübingen holds an outstanding stock of objects in its research, teaching, and display collections. The treasures in about 80 collections are not only characterized by their age and universal diversity. Being some of the largest in Europe, the Tübingen University Collections also contain worldwide unique individual pieces.

This rich heritage provides the University with opportunities, but also obligations. This includes organizing the care of the collections in a responsible manner. They must be usable for science, preserved for future generations and, last but not least, available for university teaching and provenance research. A further major goal is to increase the accessibility of the collections for the public.

While some collections have already been in the care of museums for many years and are looked after by specialized curators, others are in danger of being lost. In 2006, the University therefore founded the Museum of the University of Tübingen MUT as a central institution aiming at systematically processing and exhibiting collection items.

Since 2010, student projects at the Museum of the University of Tübingen MUT have helped inventory and present neglected collections. The master's profile "Museum & Collections" is responsible for organizing these projects since 2016.

This brochure is designed to inform the public about the enormous diversity of our collections. Let us invite you on an exciting journey of discovery through the world of science and cultural history: Visit the collections or participate in one of the guided tours and take advantage of the digital formats and the manifold events of the MUT!

Prof. Dr. Ernst Seidl

Director of the Museum of the University of Tübingen MUT

Contents

The Collections of the University (Map)	6
Digital Formats of the MUT	8

HOHENTÜBINGEN CASTLE	12
Museum Ancient Cultures	● 13
Plaster Cast Collection of Classical Archaeology	● 14
Egyptian Collection	● 15
Near Eastern Collection	● 16
Ethnological Collection	● 17
Photo Collection of Classical Archaeology	● 18
Ceramics Collection of Medieval Archaeology	● 19
Coin Collection of Classical Archaeology	● 20
Original Collection of Classical Archaeology	● 21
Collection of Prehistory	● 22
Archive of Everyday Cultures	● 23
Collection of the Protestant Preachers Institute	● 24
Collection of Recent Prehistory	● 25
Castle Barrel	● 26
Castle Church	● 27
Castle Laboratory	● 28
Castle Observatory	● 29

OPEN COLLECTIONS	30
Anatomical Collection	● 31
Ophthalmological Collection	● 32
Botanical Gardens and Collections	● 33
Computer Collection	● 34
Prints and Drawings Collection	● 35
Mathematical Model Collection	● 36
Media Library of the Center for Media Competence	● 37
Mineralogical Collection	● 38
Musical Instrument Collection	● 39
Paleontological Collection	● 40
Psychological Collection	● 41
Schmidgall Collection	● 42
Collections of the University Library	● 43
Collections of the University Archive	● 44
Sculpture Collection of the University	● 45

COLLECTIONS OPEN ON REQUEST	46
Old Observatory	● 47
Archaeobotanical Collection	● 48
Zooarchaeological Collection	● 49
Arno-Ruoff-Archive	● 50
Biblical-Archaeological Collection	● 51
Biochemical Instrument Collection	● 52
Biochemical Preparation Collection	● 53
Folded Book Collection Heidtmann	● 54
Photo Collection of the Institute of Art History	● 55
Kölle Collection of Paintings	● 56
Geoarchaeological Collection	● 57
Collection of Paintings of the University	● 58
Geographical Map Collection	● 59
Glass Slide Collection of the Institute of Art History	● 60
Halm Archive	● 61
Herbarium Tubingense	● 62
Coin Collection of Islamic Numismatics	● 63
Osteological Collection	● 64
Pathology Collection	● 65
Physics Collection	● 66
Portrait Collection Goldberg	● 67
Professors' Gallery	● 68
Collection of the Center for Media Competence	● 69
Collection for Ethics and History of Medicine	● 70
Gärtner Collection at the Herbarium Tubingense	● 71
Vinyl Record Collection of the Institute of Musicology	● 72
Swabian State Music Archive	● 73
Zoological Collection	● 74

COLLECTIONS NOT OPEN TO THE PUBLIC	76
Astrophysical Collection	● 77
Drill Core Collection	● 78
History of Science Collection	● 79
Historical Furniture Collection	● 80
Human Physiology Collection	● 81
Printing Plate Collection	● 82
Mathematical Instrument Collection	● 83
Medical History Instrument Collection	● 84
Medical-Technical Collection	● 85
Mouflage Collection	● 86
Neonatological Collection	● 87
Pharmacological Collection	● 88
Collection of Inorganic Chemistry	● 89
Women's Clinic Collection	● 90
Halbritter Collection	● 91
Micropaleontology Collection	● 92
Pelling-Zarnitz Collection	● 93
Sander Collection	● 94
Lessing and Schmalzriedt Collection	● 95
Chart Collection of the ENT Clinic	● 96
Silver Treasure of the University	● 97
Dental Collection	● 98
Imprint and Sponsors	102

The University Collections



- 1 Administrative Office of the MUT
- 2 Collection Center

HOHENÜBINGEN CASTLE

- 1 Museum of Ancient Cultures
- 2 Plaster Cast Collection
- 3 Egyptian Collection
- 4 Near Eastern Collection
- 5 Ethnological Collection
- 6 Photo Collection of Classic Archaeology
- 7 Ceramics Collection of Medieval Archaeology
- 8 Coin Collection of Classical Archaeology
- 9 Original Collection of Classical Archaeology
- 10 Collection of Prehistory
- 11 Archive of Everyday Cultures
- 12 Collection of the Protestant Preachers Inst.
- 13 Collection of Recent Prehistory
- 14 Castle Barrel
- 15 Castle Church
- 16 Castle Laboratory
- 17 Castle Observatory

OPEN COLLECTIONS

- 1 Anatomical Collection
- 2 Ophthalmological Collection
- 3 Botanical Gardens and Collections
- 4 Computer Collection
- 5 Prints and Drawings Collection
- 6 Mathematical Model Collection
- 7 Media Library of the C. f. Media Comp.
- 8 Mineralogical Collection
- 9 Musical Instrument Collection
- 10 Paleontological Collection
- 11 Psychological Collection
- 12 Schmidgall Collection
- 13 Collections of the University Library
- 14 Collections of the University Archives
- 15 Sculpture Collection of the University

OPEN ON REQUEST

- 1 Old Observatory
- 2 Archaeobotanical Collection
- 3 Zooarchaeological Collection
- 4 Arno-Ruoff-Archive
- 5 Biblical-Archaeological Collection
- 6 Biochemical Instrument Collection
- 7 Biochemical Preparation Collection
- 8 Folded Book Collection Heidtmann
- 9 Photo Collection of the Institute of Art Hist.
- 10 Collection of Paintings of the University
- 11 Kölle Collection of Paintings
- 12 Geoarchaeological Collection
- 13 Geographical Map Collection
- 14 Glass Slide Collection of the KHI
- 15 Halm Archive
- 16 Herbarium Tubingense
- 17 Coin Collection of Islamic Numismatics
- 18 Osteological Collection
- 19 Pathology Collection
- 20 Physics Collection
- 21 Portrait Collection Goldberg
- 22 Professors' Gallery
- 23 Collection of the C. f. Media Comp.
- 24 Collection for Ethics and History
- 25 Gärtner Collection
- 26 Vinyl Record Collection

- 27 Swabian State Music Archive
- 28 Zoological Collection

NOT OPEN TO THE PUBLIC

- 1 Astrophysical Collection
- 2 Drill Core Collection
- 3 History of Science Collection
- 4 Historical Furniture Collection
- 5 Human Physiology Collection
- 6 Printing Plate Collection
- 7 Mathematical Instrument Collection
- 8 Medical History Instrument Collection
- 9 Medical-Technical Collection
- 10 Moulage Collection
- 11 Neonatological Collection
- 12 Pharmacological Collection
- 13 Collection of Inorganic Chemistry
- 14 Woman's Clinic Collection
- 15 Halbritter Collection
- 16 Micropaleontology Collection
- 17 Pelling-Zarnitz Collection
- 18 Sander Collection
- 19 Lessing and Schmalzriedt Collection
- 20 Chart Collection of the ENT Clinic
- 21 Silver Treasure of the University
- 22 Dental Collection

The eMuseum



Are you staying for a short visit in Tübingen and do not have enough time to visit all the accessible collections? You want to get a first impression of the objects of a collection prior to your visit or further information about an object that you saw? Then we have just the right solution for you: At www.emuseum.uni-tuebingen.de where you will find a large selection of objects from our university collections, including those that are currently not accessible.

Currently there are about 6,000 objects from 44 collections in our virtual museum. More are being added continuously, so there is always something new to discover. The eMuseum offers you many possibilities. Digital versions of both current and past exhibitions are permanently accessible here. It is also possible to conveniently search for an individual selection of collection objects. Registered users even have the possibility to compile a collection of personal favorites.

www.emuseum.uni-tuebingen.de

Digital Formats of the MUT



360°-Exhibitions



In a new format, the Museum of the University of Tübingen MUT offers insights into current and past exhibitions. These can be visited virtually in 360° view. The experience is completed by additional information and an audio guide is available in several languages.

360°-exhibitions expand the possibilities of the presentation of analog exhibitions in the digital space. A camera with two lenses creates a panoramic image of the entire space, and a series of panoramas can then be combined via software to create a tour of the rooms. Furthermore, the images can be supplemented with additional content, such as images, text, and videos. The tours can be experienced on a PC or smartphone, requiring a stable connection.

www.unimuseum.uni-tuebingen.de/de/ausstellungen/online-ausstellungen/360-ausstellungen.html

3D-Museum



Since 2017, the MUT, in cooperation with the eScience-Center Tübingen, has also been making objects from its approximately 80 teaching collections accessible using photogrammetric recording techniques. 3D modeling allows an impressively close look at the objects and makes them constantly accessible worldwide. This creates a perfect opportunity to examine objects that are otherwise only presented to visitors behind glass – or cannot be shown to the public at all.

The models can be viewed in a browser or with VR glasses. All models can be downloaded free of charge and reproduced using a 3D printer.

www.unimuseum.uni-tuebingen.de/de/sammlungen/3d-museum.html

Museum Ancient Cultures Hohentübingen Castle



In the Museum Ancient Cultures at Hohentübingen Castle, exhibits not one but two UNESCO World Heritage Sites and one Guinness Book entry: In addition to the oldest figurative works of art and a bone flute from the caves of the Swabian Alb as well as artifacts from the pile-dwelling settlements, the oldest giant barrel in the world can also be visited during the winter months. Furthermore, you can have a look at the spectacular ancient Egyptian offering chamber of Seschemnefer the third, the rare star coffin of Idi, the famous Tübingen Hoplite as well as the casts of ancient sculptures in the large Knights' Hall. In total, the Museum Ancient Cultures, but also the Museum "World Cultures" with its ethnological collection, displays more than 4,000 objects on about 2,000 m². Special exhibitions and events extend the offer of the most diverse museum in the region.

www.unimuseum.de

ADDRESS

MUT | Ancient Cultures | Hohentübingen Castle
Burgsteige 11, 72070 Tübingen

OPENING HOURS

Wednesday to Sunday, 10 am to 5 pm | Thursday, 10 am to 7 pm

GUIDED TOURS

"Saturdays at 3 pm", "Sundays at 3 pm", and "Themed Presentations at 11 am"
Group and school tours available at any time on request

CONTACT | BOOKING

museum@uni-tuebingen.de | +49 7071 29-77579

Hohentübingen Castle

Wildpferd aus Mammutelfenbein
Vogelherd-Höhle, etwa 35 000 Jahre alt
Wild horse made of mammoth ivory
Vogelherd Cave, circa 35 000 years old

Plaster Cast Collection of Classical Archaeology



The collection of plaster casts built up by the Institute of Classical Archaeology since the beginning of the nineteenth century now consists of about 370 objects. The casts of famous statues, most of them life-size, from the largest European museums, as well as reliefs and architectural fragments, offer a fascinating tour of ancient art history from its beginnings to the Roman Imperial period.

Among the oldest casts in the collection is one of the Laocöon group found in Rome in 1506 (image), its marble original is currently in the Vatican. Particularly impressive casts also include the Apollo of Belvedere, the Diana of Versailles, the Discus Thrower of Myron, the Farnese Hercules, and the Nike of Samothrace.

ADDRESS

MUT | Ancient Cultures | Hohentübingen Castle | Knights' Hall
Burgsteige 11, 72070 Tübingen

OPENING HOURS

Wednesday to Sunday, 10 am to 5 pm | Thursday, 10 am to 7 pm

GUIDED TOURS

"Sundays at 3 pm"

Group and school tours available at any time on request

CURATOR

Dr Alexander Heinemann

alexander.heinemann@uni-tuebingen.de | +49 7071 29-72379

Egyptian Collection



The Egyptian Collection covers the period from Egyptian prehistory around 5500 BC to the Christian era in the seventh century AD. Displayed are mainly everyday objects and artifacts of belief in the afterlife. Including ceramic and stone vessels, bronze votive offerings and grave goods, the collection shows an impressive spectrum of Egyptian culture, whose relics offer a profound insight into pharaonic Egypt.

Among the outstanding highlights are the offering chamber of Seschemnefer III and his wife Hetepheres (image/detail) from Giza and the coffin of Idi from Asyut, its lid equipped with a sidereal clock that is only rarely preserved.

ADDRESS

MUT | Ancient Cultures | Hohentübingen Castle
Burgsteige 11, 72070 Tübingen

OPENING HOURS

Wednesday to Sunday, 10 am to 5 pm | Thursday, 10 am to 7 pm

GUIDED TOURS

"Sundays at 3 pm"

Group and school tours available at any time on request

CURATOR

Dr Carolina Teotino-Tatto

c.teotino@uni-tuebingen.de | +49 7071 29-76061

Near Eastern Collection



The collection of Mesopotamian cuneiform texts, which was only founded after World War II, covers the entire range of Ancient Near Eastern script development from the third to the first millennium BC. Over this long period of time, the gradual changes in the characters can be traced. The texts allow an insight into different types of ancient Near Eastern writing, such as charters, letters, lexical lists, and royal inscriptions. Objects of small art, such as original seals and replicas of ancient oriental sculptures and relief art, complete the collection. A medal commemorates Georg Friedrich Grotefend (1775–1853), one of the early pioneers of Ancient Near Eastern studies and the first decipherer of the cuneiform script.

ADDRESS

MUT | Ancient Cultures | Hohentübingen Castle
Burgsteige 11, 72070 Tübingen

OPENING HOURS

Wednesday to Sunday, 10 am to 5 pm | Thursday, 10 am to 7 pm

GUIDED TOURS

“Sundays at 3”,
Group and school tours available at any time on request

MANAGEMENT

Prof Dr Wiebke Meinhold
wiebke.meinhold@uni-tuebingen.de | +49 7071 29-76758
Apl Prof Dr Andreas Fuchs
andreas.fuchs@uni-tuebingen.de | +49 7071 29-77148

Ethnological Collection



The collection, founded between 1890 and 1910, now belongs to the Ethnology Department of the Institute of Asian and Oriental Studies. It comprises about 4,000 ethnographica, about 2,500 glass plate slides as well as 250 watercolors and drawings. The permanent exhibition in the Fünfeckturm (pentagonal tower) of the Castle shows a selection that reflects the regional focus of the collection – the Pacific and the Amazon. Highlights include Shipibo-Conibo clay vessels from Peru and Malanggan carvings from the Southwest Pacific. An outstanding piece in the collection is a wall panel – known as the “Poupou” (image) – being the ancestral representation of Hinematiaro a Maori princess. It is said that the panel was given to the delegation on James Cook’s first voyage to the South Seas (1768–1771) by the Maori. For conservation purposes, it is exhibited only on special occasions. Important objects of the collection are documented in the eMuseum of the MUT.

ADDRESS

Ethnological Collection | Fünfeckturm | Hohentübingen Castle
Burgsteige 11, 72070 Tübingen

OPENING HOURS

Wednesday to Sunday, 10 am to 5 pm | Thursday, 10 am to 7 pm

GUIDED TOURS

Group and school tours available at any time on request

CURATOR

Dr Markus Schleiter
markus.schleier@uni-tuebingen.de | +49 7071 29-78537

Photo Collection of Classical Archaeology



The Photo Collection of the Institute of Classical Archaeology was established in the twentieth century. It includes old and recent photographs of ancient sites as well as excavations. Many of the photos have become historic due to subsequent alterations or additions to antique sculptures and images of antiquities in exhibition spaces from the early twentieth century.

The extensive collection of black and white photographs offers an important complement for tours and guided tours in the museum as well as for teaching and research, with the aesthetic intrinsic value of the photographs playing an increasingly important role.

ADDRESS

Photo Collection of Classical Archaeology | Institute of Classical Archaeology | Hohentübingen Castle
Burgsteige 11, 72070 Tübingen

OPENING HOURS

On request

CURATOR

Dr Alexander Heinemann
alexander.heinemann@uni-tuebingen.de | +49 7071 29-72379

Ceramics Collection of Medieval Archaeology



The comparison and analysis of ceramics are an important criterion for the chronological, geographical, and social classification of past cultures. Numerous unlocated sherds from the collection of Albert Kley (1907–2001) and not accurately assignable rejects from the then State Monuments Office in Tübingen served as the basis of the ceramics collection, which was established by the Department of Medieval Archaeology. In the winter semester 2008/09 the collection was organized in the context of a lecture course and partly made accessible via the webpage. The collection offers a good overview of the development of ceramic objects in Southwest Germany from the Migration Period to the Early Modern Period.

ADDRESS

Department of Medieval Archaeology | Hohentübingen Castle
Burgsteige 11, 72070 Tübingen

OPENING HOURS

On request

MANAGEMENT

Prof Dr Natascha Mehler
natascha.mehler@uni-tuebingen.de | +49 7071 29-78559

CURATOR

Dr Jörg Petrasch
joerg.petrasch@uni-tuebingen.de | +49 7071 29-75456

Coin Collection of Classical Archaeology



The Coin Collection, whose roots go back to 1798, is one of the largest and most important university collections of its kind in Germany, with approximately 20,000 objects. The main focus is on about 8,000 ancient Greek and 6,000 Roman coins, in addition to 2,000 medieval and early modern coins as well as 3,000 medals. Particularly beautiful pieces are an archaic silver coin (image) from Kaulonia in Lower Italy or the famous Athenian tetradrachms from the middle of the fifth century BC. Combined with the Coin Collection of Islamic Numismatics, the Coin Collection of the University of Tübingen is the most extensive of any university worldwide.

ADDRESS

MUT | Ancient Cultures | Hohentübingen Castle
Burgsteige 11, 72070 Tübingen

OPENING HOURS

Wednesday to Sunday, 10 am to 5 pm | Thursday, 10 am to 7 pm

GUIDED TOURS

“Sundays at 3”

Group and school tours available at any time on request

CURATOR

PD Dr Stefan Krmnicek
stefan.krmnicek@uni-tuebingen.de | +49 7071 29-74369

Original Collection of Classical Archaeology



The collection of antique originals, whose beginnings date back to 1798, currently contains about 10,000 objects from the Mediterranean region. The largest part is made up of clay vessels, small bronzes and terracottas from the third millennium BC to the fifth century AD. Most of the pieces come from private collections, although the institute’s own excavations have also complemented the collection. The most famous exhibit is the “Hoplite” (image), the bronze statuette of an Olympic athlete in starting position, dating from around 490/80 BC. Although the origins of the hoplitodromos lie in military training, the runners were civilian athletes.

ADDRESS

MUT | Ancient Cultures | Hohentübingen Castle
Burgsteige 11, 72070 Tübingen

OPENING HOURS

Wednesday to Sunday, 10 am to 5 pm | Thursday, 10 am to 7 pm

GUIDED TOURS

“Sundays at 3”

Group and school tours available at any time on request

CURATOR

Dr Alexander Heinemann
alexander.heinemann@uni-tuebingen.de | +49 7071 29-72379

Collection of Prehistory



The Collection of Prehistory contains significant finds from the beginning of human history. One focus is on objects from the Palaeolithic Age, which were found in caves in the Swabian Alb. Excavations carried out in 1931 under Gustav Riek (1900–1976) have yielded several ivory figurines from 40,000-year-old strata, which rank among the oldest figurative works of human art. They provide the earliest evidence of essential human cultural techniques worldwide – for art, music, and religion. A second focus are the finds made by Ludwig Kohl-Larsen (1884–1969) in the 1930s in the Mumba Cave in what is now Tanzania. Part of these assemblages are also important hominin remains, such as the upper jaw of an Australopithecus afarensis (Garusi) and the world’s oldest human remains of a Homo sapiens (Eyasi).

ADDRESS

MUT | Ancient Cultures | Hohentübingen Castle
Burgsteige 11, 72070 Tübingen

OPENING HOURS

Wednesday to Sunday, 10 am to 5 pm | Thursday, 10 am to 7 pm
Kohl Larsen Collection: on request

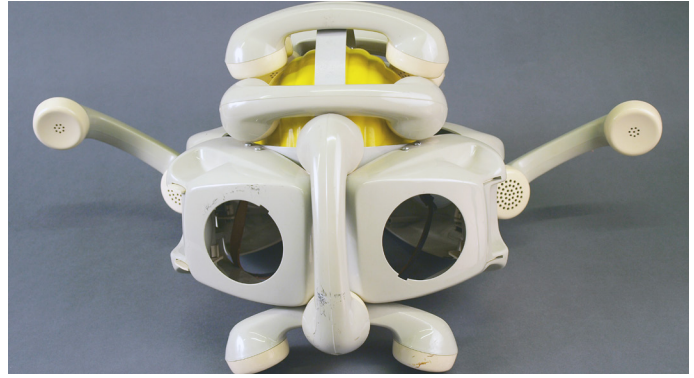
GUIDED TOURS

“Sundays at 3”
Group and school tours available at any time on request

CURATOR

Dr Gregor Bader
gregor.bader@uni-tuebingen.de | +49 7071 29-74993

Archive of Everyday Cultures



The “Archive of Everyday Culture” includes various collections of the institute dating back to the 1930s. These include objects of regional everyday life, political insignia, books and mass press, clothing, masks (image) and wall decorations, post-cards and advertising pictures, toys and films, photographs and albums, autobiographical texts and files on the history of the field. Since the end of the 1960s, the collection canon of traditional folklore (custom props, house models, traditional costumes, pottery) has been specifically supplemented by products of mass culture.

The Arno Ruoff Archive of the Tübingen Center for Language in Southwest Germany is also part of the collection and contains numerous dialect recordings as well as a digital language atlas (p. 50). The archive is used for teaching and research, it lends objects to exhibitions and is open to external scholars by appointment.

ADDRESS

Archive of Everyday Culture | Ludwig Uhland Institute of Historical and Cultural Anthropology
Burgsteige 11, 72070 Tübingen

OPENING HOURS

On request

CURATOR

Dr Karin Bürkert
karin.buerkert@uni-tuebingen.de | +49 7071 29-72375

Collection of the Protestant Preachers Institute



The Preachers Institute of the Protestant Theology Faculty has maintained its seat in the Castle Church in Hohentübingen Castle since its foundation in 1815. Theology professor Jonathan Friedrich Bahnmaier (1774–1841) was the first to prepare theology candidates for their preaching, worship and teaching practice in the chapel and sacristy in a novel seminaristic-conservatory style. At the interface of university, church, and society, the “spiritual polyclinic” was meant to provide prospective preachers and teachers of religion with a comprehensive practical theological education. To this day, courses of the Institute of Practical Theology are taught there. The collection of the Protestant Preachers Institute is simultaneously the church furnishings (image). It consists for instance of paintings of the eighteenth century and liturgical equipment used in worships.

ADDRESS

Protestant Preachers Institute | Castle Church of Hohentübingen Castle
Burgsteige 11, 72070 Tübingen

OPENING HOURS

It is currently not possible to view the collection.
Open only on special occasions

MANAGEMENT

Prof Dr Gerald Kretzschmar
gerald.kretzschmar@uni-tuebingen.de | +49 7071 29-73315
Secretary | +49 7071 29-78011

Collection of Recent Prehistory



The teaching collection of the Institute of Prehistory and Early History goes back to the prehistorian and Tübingen professor Robert Rudolf Schmidt (1882–1950), who founded the Institute of Early History in 1921.

The education of students was at the core of the development of the collection objects. In addition, the collection also houses some assemblages of supraregional importance. These are mainly finds from excavations of the Neolithic and Late Bronze Age wetland settlements at the Federsee, which have been part of the UNESCO World Heritage Site “Prehistoric Lake Dwellings around the Alps” since 2011. Also on display are objects from the Iron Age fortified settlements of the Heuneburg on the upper Danube and Heidengraben near Grabenstetten on the Swabian Alb. A large number of objects can also be found in the eMuseum of the MUT.

ADDRESS

MUT | Ancient Cultures | Hohentübingen Castle
Burgsteige 11, 72070 Tübingen

OPENING HOURS

Wednesday to Sunday, 10 am to 5 pm | Thursday, 10 am to 7 pm

GUIDED TOURS

“Sundays at 3”
Group and school tours available at any time on request

CURATOR

Dr Jörg Petrasch
joerg.petrasch@uni-tuebingen.de | +49 7071 29-75456

Castle Barrel



Beneath the large Knights' Hall of the Museum of Ancient Cultures, in the cellar of Hohentübingen Castle, is the oldest preserved giant wine barrel in the world (image). In 1546, Duke Ulrich of Württemberg (1487–1550) had this barrel built by the Bönningheim cooper Simon Binder. The volume of the barrel is about 84,000 liters. Today, the barrel holds an entry in the Guinness World Records book due to its age. Since 1991, the oldest giant barrel had not been open to the public due to a colony of mouse-eared bats living in the rear area of the castle cellar. In 2018, however, access to this giant barrel was granted again under strict precautions, including that guided tours are only offered during the winter months. See www.fassticket.de

ADDRESS

MUT | Ancient Cultures | Hohentübingen Castle
Burgsteige 11, 72070 Tübingen

OPENING HOURS

Open from November 1st to March 15th, only guided tours.
More information on www.fassticket.de and www.unimuseum.de

GUIDED TOURS

Group and school tours available at any time on request during the season

CONTACT | BOOKING

museum@uni-tuebingen.de | +49 7071 29-77579

Castle Church



Today's Castle Church belongs to the type "hall church" (image) and its structural equipment, such as the wall painting, pews, and ceiling, goes back to the time of the Nordic Neo-Renaissance of the nineteenth century. During the great castle reconstructions during the sixteenth century by Duke Ulrich of Württemberg (1487–1550), the Castle Church was moved to its present location in the south wing in 1535. Thus, it is the oldest Protestant Castle Church of all. During the French siege of the castle at the end of the Thirty Years' War, it was severely damaged in 1647, making extensive renovation necessary. Since the handover of the entire castle to the University in 1816 by King Wilhelm I of Württemberg (1781–1864), the Castle Church together with the sacristy has served as the seat of the Protestant Preaching Institute. Here, theology students have received part of their practical theological training for over 200 years.

ADDRESS

Protestant Preachers Institute | Castle Church of Hohentübingen Castle
Burgsteige 11, 72070 Tübingen

OPENING HOURS

Open only on special occasions

MANAGEMENT

Prof Dr Gerald Kretzschmar
gerald.kretzschmar@uni-tuebingen.de | +49 7071 29-73315
Sekretariat 07071-2978011

Castle Laboratory



The former kitchen at Hohentübingen Castle was transformed by the University into the world's first biochemical laboratory in the early nineteenth century. Today, this room is used as a museum, a place of scientific history. It was here that the first German biochemist Georg Karl Ludwig Sigwart (1784–1864) worked in 1818; it was here that Felix Hoppe-Seyler (1825–1895) researched and named hemoglobin, and it was here that Friedrich Miescher (1844–1895) discovered nucleic acid, the basic substance of the hereditary substances DNA and RNA, in 1869.

Thanks to the financial support of the biopharmaceutical company CureVac AG, the University set up a permanent interactive exhibition at the historic site in 2015. At the center of the presentation is Miescher's still-existing test tube with nucleic acid and other historical laboratory equipment and preparations (image), which help to present the decisive chapters of biochemistry.

ADDRESS

Castle Laboratory | Hohentübingen Castle
Burgsteige 11, 72070 Tübingen

OPENING HOURS

Wednesday to Sunday, 10 am to 5 pm | Thursday, 10 am to 7 pm

GUIDED TOURS

Group and school tours available at any time on request

CONTACT | BOOKING

museum@uni-tuebingen.de | +49 7071 29-77579

Castle Observatory



The small but historically important observatory at Hohentübingen Castle was built in 1814 specifically to use the so-called "Reichenbach Repetitive Circle". Only a few of these precision devices can be found worldwide, for example in Florence, Milan and Paris. However, the unique ensemble of this historical device and specially built observatory exists only in Tübingen. The Tübingen professor of mathematics Johann Gottlieb Friedrich von Bohnenberger (1765–1831) is closely associated with this building.

As an astronomer, physicist, and surveyor, he was also responsible for pioneering developments and the invention of the gyroscope.

To mark the 200th anniversary of the Württemberg national survey, which originated at this site, at the northeast tower of the castle, the observatory was renovated in 2018 and made accessible to visitors.

ADDRESS

Castle Observatory | Hohentübingen Castle
Burgsteige 11, 72070 Tübingen

OPENING HOURS

Wednesday to Sunday, 10 am to 5 pm | Thursday, 10 am to 7 pm

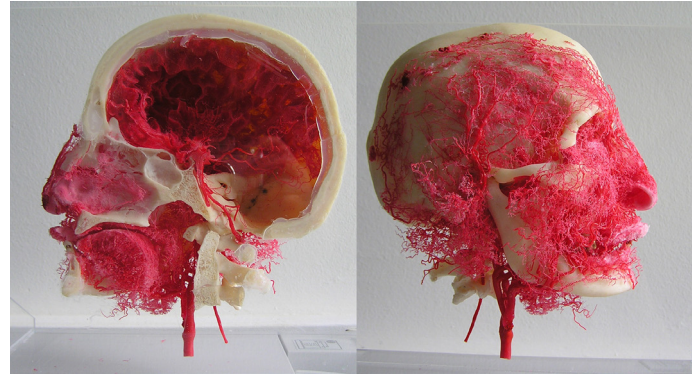
GUIDED TOURS

Group and school tours available at any time on request

CONTACT | BOOKING

museum@uni-tuebingen.de | +49 7071 29-77579

Open Collections



The Anatomical Collection is primarily used for medical and dental education. In addition to historical apparatuses, such as the microscope from the Berlin company Bénéche & Wasserleין (1850), it contains a number of anatomical and embryological models and preparations. Wax models reconstructed from microscopic sections are used to illustrate the development of the individual organs in the embryo. Highlights of the collection are the wax model of a primed body from the famous Parisian workshop Tramond (c. 1888), the historical skull collection based on Franz Joseph Gall (1758–1828), and the so-called “Stone Child of Leinzell”, a fossilized fetus found in 1720 during the dissection of a 91-year-old woman (currently as a loan to the House of History Baden-Württemberg, Stuttgart).

ADDRESS

Institute of Anatomy (Old Anatomy)
Österbergstraße 3, 72074 Tübingen

OPENING HOURS

Monday to Friday, 9 am to 5 pm

MANAGEMENT

Prof Dr Bernhard Hirt
bernhard.hirt@uni-tuebingen.de | +49 7071 29-73015

CURATOR

Dr Peter Neckel
peter.neckel@uni-tuebingen.de | +49 7071 29-72169

Ophthalmological Collection



The Eye Clinic owns 50 historical ophthalmological examination devices. They form – among other objects – the core of the collection. This very rare equipment usually dates from the period 1890 to 1910 and reflects the development of ophthalmology at that time. It was not until the second half of the nineteenth century that ophthalmology established itself as an independent university subject. The eye clinic was founded in Tübingen in 1875.

The objects in the collection serve primarily to illustrate and visually explain the history of ophthalmological research, which is based in Tübingen in the field of research “History of Ophthalmology”.

ADDRESS

University Eye Hospital Tübingen
Elfriede-Aulhorn-Straße 7, 72076 Tübingen

OPENING HOURS

Parts of the collection are open to the public in the clinic.

MANAGEMENT

Prof Dr Jens Martin Rohrbach
martin.rohrbach@med.uni-tuebingen.de | +49 7071 29-84761

Botanical Gardens and Collections



Among the collections, the Botanical Gardens have a special position, as living “objects” can be seen here. On ten hectares one can find almost 10,000 plant species from all over the world. The plants are arranged according to geographical, ecological, and familial aspects.

Rhododendrons are a focal point, with about 75 cultivated forms and over 170 wild species. The systematic section – below the Tropicarium (image) – shows the families of flowering plants based on their relationships. Above the North Ring, the Arboretum, a systematically arranged collection of woody plants, is located on five hectares. The greenhouses display the subtropical and tropical plant world on more than 3,000 square meters. The Botanical Gardens see themselves as a place of education as well as a meeting and recreation place for the urban population.

ADDRESS

Botanical Garden of the University of Tübingen
Hartmeyerstraße 123, 72076 Tübingen

OPENING HOURS

Monday to Friday, 7.30 am to 4.30 pm (greenhouses from 8 am)
Weekends and holidays, 8 am to 4.30 pm (greenhouses 10 am to 4.30 pm)

GUIDED TOURS

“Sundays at 2” (on every second Sunday of the month at 2 pm);
Group and school tours available on request

CURATOR

Dr Alexandra Kehl
alexandra.kehl@botgarten.uni-tuebingen.de | +49 7071 29-76943

Computer Collection



The Wilhelm Schickard Institute displays a replica of a calculating machine (image) by Tübingen professor Wilhelm Schickard (1592–1635), which is considered the first of its kind worldwide and is regarded as the prelude to computer technology. The computer collection focuses on the documentation of two revolutions in computer technology: In 1957, Kenneth Olsen (1926–2011) and Harlan Anderson (1929–2019) founded the company DEC (Digital Equipment Corporation) with the aim of producing small computers that were suitable for offices and laboratories without their own operating personnel and without air conditioning. In 1960, they introduced their PDP 1 (Programmed Data Processor) to the market and revolutionized the idea of computers. Instead of huge machines costing millions of dollars, the PDPs created a sensation. Soon, a new market for hobbyist computers and personal computers (PCs) developed. The collection shows some devices from this PC world.

ADDRESS

Wilhelm-Schickard-Institut
Sand 1, 13, 14 (2nd floor), 72076 Tübingen

OPENING HOURS

Monday to Friday, 8 am to 8 pm

CONTACT PERSON

Prof Dr Daniel Huson
huson@informatik.uni-tuebingen.de | +49 7071 29-70451
Prof em Dr Herbert Klaeren
klaeren@informatik.uni-tuebingen.de

Prints and Drawings Collection



Since 1897, the Prints and Drawings Collection at the Institute of Art History has served as a teaching and art collection. It was founded by Konrad Lange (1855–1921), the first professor of art history in Tübingen, in order to provide a practice-oriented education for students. It is also open to the general public with an interest in art. Visitors can have a look at originals in the study hall if they made an appointment. During the semester, small thematic exhibitions can also be seen there. The collection includes art on paper from around 1500 to the present day as well as important private donations. The main focus is on the Max Kade Collection (New York), the Rieth Collection (Tübingen) with self-portraits of artists, the Heide and Wolfgang Voelter Collection (Tübingen), the endowment of prints and a large collection of drawings by the “Sprayer of Zurich”, Harald Naegeli, as well as endowments of the Tübingen Art History Society e.V. on contemporary art.

ADDRESS

University Library | Bonatzbau
Wilhelmstraße 32, 72074 Tübingen

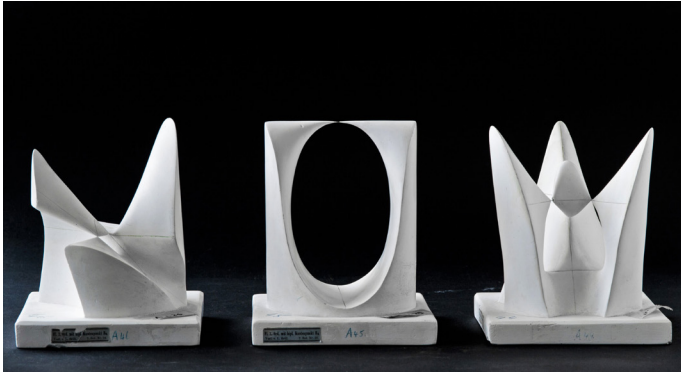
OPENING HOURS

On request

CURATOR

Dr Ariane Koller
graphische.sammlung@uni-tuebingen.de | 07071 29-77058

Mathematical Model Collection



The Mathematical Model Collection comprises more than 400 objects. The collection was founded in 1885 by Alexander von Brill (1842–1935), professor of mathematics in Tübingen. Most of the models are made of plaster. Thread models and objects made of cardboard, wood and wire are also part of the collection. Among the many models, most of which come from the Darmstadt publisher Ludwig Brill (1844–1940) and the Leipzig publisher Martin Schilling (1844–1908), there are also objects made by various mathematicians. Alexander von Brill, who together with his colleague Felix Klein (1849–1925) founded the first German modeling cabinet at the Technical University of Munich, influenced a new generation of mathematicians and engineers, such as Max Planck (1858–1947) and Rudolf Diesel (1858–1913). Brill received several prototype models from his students and colleagues, which are a unique feature of the Tübingen collection. A larger number of them can be found in the eMuseum of the MUT.

ADDRESS

Department of Mathematics
Auf der Morgenstelle 10 (Building C), 72076 Tübingen

OPENING HOURS

Monday to Friday, 8 am to 8 pm

MANAGEMENT

Prof Dr Frank Loose
frank.loose@uni-tuebingen.de | +49 7071 29-72898

Media Library of the Center of Media Competence



With its current stock of over 2,500 pieces of media, the collection of the Media Library of the Center for Media Competence has a comprehensive, internationally oriented range of films of all genres, types, and formats: The selection ranges from classics to current blockbusters, award-winning documentaries and arthouse films to animated works or television series. Most of the films are available on DVD and Blu-ray Disc and can be viewed on site. University members may borrow the media for research and teaching purposes upon presentation of a valid ID. The video archive, which includes around 20,000 titles from TV recordings of the past 40 years, can also be accessed on request.

ADDRESS

Center for Media Competence | Media Library | Brechtbau
Wilhelmstraße 50, 72074 Tübingen

OPENING HOURS

Monday to Friday, 10.15 am to 4 pm

MANAGEMENT

Maristel Alves dos Santos M.A.
mediathek@zfm.uni-tuebingen.de | +49 7071 29-75411

Mineralogical Collection



The Mineralogical Collection presents important minerals and ores in addition to precious stones from all over the world, through which light is shed on our understanding of “Planet Earth” and our everyday lives. In the exhibition space behind the Lothar-Meyer-Bau, the following themes are covered in over 40 display cases: The diversity of minerals, ores and their deposits, applied mineralogy, fluorescence, mineral properties, jewelry and precious stones, mineral salts and spa waters, and minerals in everyday life.

Significant and rare meteorites – the majority from the nineteenth century – give the collection both great historical value and international acclaim.

ADDRESS

Lothar-Meyer-Bau
Wilhelmstraße 56, 72074 Tübingen

OPENING HOURS

Wednesday, 3 pm to 5 pm

GUIDED TOURS

Group and school tours available at any time on request

COLLECTION COMMISSIONER

Dr Christoph Berthold
christoph.berthold@uni-tuebingen.de | +49 7071-2972604

Musical Instrument Collection



In 1999, the Institute of Musicology was the recipient of a collection of historical wind instruments by Dr. h.c. Karl Ventzke (1933–2005). After acquisitions from the loan stock, it comprises about 150 objects. The institute thus has one of the most important collections of instruments at German universities. The main focus is on the wind instruments of the symphony orchestra at the end of the nineteenth century, the development of the flute from 1800–1925, “German bassoon” and “French bassoon” from Savary (1824) to Heckel (about 1910), oboes, clarinets, saxophones, horns, trumpets, and trombones. It features spectacular objects such as the early Heckelphon No. 18, a tárogató, a “Stuttgart bassoon” and an alto transverse flute from Theobald Böhm’s own workshop. The collection was reinstalled in the foyer of the institute building (Pfleghof) on the occasion of the 100th anniversary of the institute and made accessible to the public.

ADDRESS

Institute of Musicology (Pfleghof)
Schulberg 2, 72070 Tübingen

OPENING HOURS

Monday to Friday, 9 am to 7 pm

GUIDED TOURS

Group and school tours available at any time on request:
sekretariat@museum.uni-tuebingen.de

MANAGEMENT

Prof Dr Thomas Schipperges
musik@uni-tuebingen.de | +49 7071 29-72414

Paleontological Collection



The Paleontological Collection of the University of Tübingen dates back to the eighteenth century. Researchers and professors such as Friedrich August Quenstedt (1809–1889), Ernst von Koken (1860–1912) and Friedrich von Huene (1875–1969) were instrumental to the great scope and high quality of the collections. The fossils are used as a research, teaching, and display collection. To this day, the primary goal is to provide international science with access to often unique material and to teach students how to handle fossil finds.

In order to convey the geological past and development to a broad public, outstanding and partly unique finds are presented in the institute's museum. Some highlights of the collection can be found in the eMuseum of the MUT.

ADRESSE

Department of Geoscience
Sigwartstraße 10, 72076 Tübingen

OPENING HOURS

Monday to Friday, 9 am to 5 pm

GUIDED TOURS

Group and school tours available at any time on request:
museum@uni-tuebingen.de | +49 7071 29-77384

CURATOR

PD Dr Ingmar Werneburg
ingmar.werneburg@senckenberg.de | +49 7071 29-73068

Psychological Collection



Human sensory impressions have repeatedly proven to be particularly deceptive. It is therefore natural that the perception of things becomes the focus of experimental psychology. After all, it is through seeing, hearing, smelling, tasting and touching that people experience information that needs to be processed cognitively. Since 2012, the permanent exhibition “KopfSachen – MindThings” has presented historical devices and tests from the psychological collection. Intelligence and competence tests, optical illusions, haptic phenomena, precision mechanical work, and the history of the department are vividly explained here.

ADDRESS

Department of Psychology
Schleichstraße 4, 72076 Tübingen

OPENING HOURS

Monday to Friday, 9 am to 6.30 pm

GUIDED TOURS

Group and school tours available at any time on request:
museum@uni-tuebingen.de | +49 7071 29-77384

COLLECTION COMMISSIONER

Stefan Ellsäcker
stefan.ellsaesser@uni-tuebingen.de | +49 7071 29-72980

Collection Schmidgall



The Schmidgall Collection goes back to Georg Schmidgall (1867–1953) from Stuttgart. His main occupation was as an administrative officer. At the same time, however, he also wrote and researched the history of fraternities. It was in this capacity as a student historian that he made a name for himself. In the course of his life, he accumulated a large collection of studentica. A part of his estate was donated to the University Archive in Tübingen, including photos, silhouettes (image), pipe bowls, and printed matter.

ADDRESS

University Archive (Bonatzbau)
Wilhelmstraße 32, 72074 Tübingen

OPENING HOURS

Consultation and information:
Monday to Friday, 9 am to 12 am and on request
Access to the Manuscript Reading Room (Bonatzbau):
Monday to Friday, 9 am to 12 am and 1 pm to 4 pm

COLLECTION COMMISSIONER

Dr Regina Keyler
uat@uni-tuebingen.de | +49 7071 29-72857

Collections of the University Library



The University Library has been acquiring literature from all disciplines since its foundation in the late fifteenth century and currently has a collection of about four million items. Of great value are the historical holdings, such as original manuscripts from India (almost 900) and the Near East (over 900), about 350 occidental medieval manuscripts and 3,000 manuscripts from the early modern period, 2,200 incunabula and almost 12,000 prints from the sixteenth century. In total, the Rara holdings include about 90,000 volumes, mainly books printed before 1700, first editions or other precious works. The historical holdings also include bequests, manuscripts, autographs, sheet music, portraits, and cadastral maps, as well as an extensive record collection and a cannonball from the siege of Hohentübingen Castle in the seventeenth century. Many of the University Library's historical holdings have already been digitized and are freely accessible:
<http://idb.ub.uni-tuebingen.de/digitue/tue/>.

ADDRESS

University Library | Department of Manuscripts and Historical Prints
Wilhelmstraße 32, 72074 Tübingen

OPENING HOURS

Access to the Manuscript Reading Room (Bonatzbau)
Monday to Friday, 9 am to 12 am and 1 pm to 4 pm

MANAGEMENT

Kristina Stöbener M.A.
kristina.stoebener@uni-tuebingen.de | +49 7071 29-72834

Collection of the University Archive



The University Archive not only preserves archival records of Tübingen's university history. It also owns supplementary collections of very different kinds, such as pamphlets from the 1968 student movement or studentica from the nineteenth century. In addition, this collection also includes graphics, silhouettes, and large historical photo collections from various disciplines and institutes. A collection of audio tapes of Uni Radio broadcasts (1988–2016) has also been archived. The spectrum of museum objects extends from early modern money chests to typars (image). Such stamps, especially university and faculty seals, are among the pieces of special rank, as they were used to authenticate important documents.

ADDRESS

University Archive (Bonatzbau)
Wilhelmstraße 32, 72074 Tübingen

OPENING HOURS

Consultation and information:
Monday to Friday, 9 am to 12 am and on request
Access to the Manuscript Reading Room (Bonatzbau):
Monday to Friday, 9 am to 12 am and 1 pm to 4 pm

COLLECTION COMMISSIONER

Dr Regina Keyler
uat@uni-tuebingen.de | +49 7071 29-72857

Sculpture Collection of the University



The exterior and interior spaces of the University were often decorated with sculptural works of art in the nineteenth and twentieth century. They depict poets and thinkers, princes, queens and kings, patrons and donors, researchers and founders of institutes, as well as allegories and memorials, and copies based on ancient works of art. This tradition of installing works of art continues into the present day. In the context of new institute buildings and research facilities, the state repeatedly commissions contemporary artists whose works establish aesthetic-sensual as well as thematic references to the task and function of the building – so called Art in Architecture.

ADDRESS

Museum of the University of Tübingen MUT | Administrative Office (Pfleghof)
Schulberg 2, 72070 Tübingen

OPENING HOURS

Advertised at the respective location.

COLLECTION COMMISSIONER

Dr Michael La Corte
michael.la-corte@uni-tuebingen.de | +49 7071 29-76439

Old Observatory



The so-called “Old University Observatory” was built from 1955 to 1957 for the newly founded Astronomical Institute of the University of Tübingen, which was formerly located at Waldhäuserstraße 64. In October 2001, the institute moved to the Sand. After the move, the observatory building became the property of the city of Tübingen, while the telescope, a 30-cm refractor, remained in the possession of the University. It was built in 1924 by Carl Zeiss Jena for the private observatory of Privy Councillor Carl Bosch (1874–1940), who was awarded the Nobel Prize for Chemistry in 1931. It was originally located in Heidelberg and was only brought to Tübingen after World War II, financed by the German Research Foundation. Today it is only used for public demonstrations.

ADDRESS

Old Observatory
Waldhäuserstraße 70, 72076 Tübingen
Institut für Astronomie und Astrophysik | Abteilung Astronomie und HEA
Sand 1, 72076 Tübingen

OPENING HOURS

On request

COLLECTION COMMISSIONER

Dipl. Phys. Thomas Schanz
schanz@astro.uni-tuebingen.de | +49 7071 29-75473

Collections Open
on Request

Archaeobotanical Collection



The Archaeobotanical Collection of the Institute for Archaeological Sciences has been established in the 1970s with seeds and fruits from botanical gardens and intensive collecting activities in Europe and the Near East. About 6,000 plant species are used mainly by archaeobotanists to identify plant findings from archaeological excavations. These ancient objects are also part of the collection. They include cultivated and wild plant finds from famous Oriental excavations, such as Troia (Turkey) and Qatna (Syria), as well as charcoal from Paleolithic caves in southwestern Germany, all of which provide information about the environment, agriculture, and diet of the people of that time.

ADDRESS

Institute for Archaeological Sciences | Working group: Archaeobotany
Rümelinstraße 23, 72070 Tübingen

OPENING HOURS

On request

CURATOR

PD Dr Simone Riehl
simone.riehl@uni-tuebingen.de | +49 7071 29-78915

COLLECTION COMMISSIONER

Àngel Blanco Lapaz M.Sc.mult.
angel.blanco-lapaz@uni-tuebingen.de | +49 7071 29-74996

Zooarchaeological Collection



Having an extensive collection of modern faunal comparative material is essential for zooarchaeological research and teaching. The collection in Tübingen is one of the largest of its kind in Europe. It includes nearly 1,500 mammal skeletons (image), ranging in size from a mouse to the dimensions of an elephant. In addition, there are skeletons and individual bones of about 800 birds and 500 fish, as well as numerous reptiles and amphibians. The collection includes autochthonous species from Europe, Africa, and the Arabian Peninsula. In addition, the institute is constantly receiving new reference specimens from zoological gardens and hunters. The Institute for Archaeological Sciences also holds more than one hundred individual specimens dating from the Early Paleolithic to the Middle Ages.

ADDRESS

Institute for Archaeological Sciences | Working group: Zooarchaeology
Rümelinstraße 23, 72070 Tübingen

OPENING HOURS

On request

CURATOR

Dr Britt Starkovich
britt.starkovich@uni-tuebingen.de | +49 7071 29-77113

COLLECTION COMMISSIONER

Àngel Blanco Lapaz M.Sc.mult.
angel.blanco-lapaz@uni-tuebingen.de | +49 7071 29-74996

Arno-Ruoff-Archive



The “Arno-Ruoff-Archive” consists of more than 2,000 audio recordings that the linguist Arno Ruoff (1930–2010) has compiled in the Southwest of Germany since the 1950s. Initially he recorded them together with the cultural scientist Hermann Bausinger (1926–2021). The recordings stored in the archive are unrehearsed free conversations. Most of the recording media fell victim to a fire in 2016, but luckily, all of the recordings are available digitally and a large portion has already been transcribed. Today, the documents provide an insight into the everyday life of people in Baden-Württemberg, Bavarian Swabia, Vorarlberg, and Liechtenstein from around 1880 to 2000. The archive is used for teaching and research. Individual recordings can be listened to on request and the transcriptions can be viewed for research purposes. More detailed information on the recording locations can be found on the website of the Tübingen Center for Language in Southwest Germany (“Tübinger Arbeitsstelle Sprache in Südwestdeutschland”) of the Ludwig Uhland Institute.

ADDRESS

Tübingen Center for Language in Southwest Germany |
Ludwig Uhland Institute of Historical and Cultural Anthropology
Ob dem Himmelreich 7, 72074 Tübingen

OPENING HOURS

On request

MANAGEMENT

Prof em Dr Hubert Klausmann
hubert.klausmann@uni-tuebingen.de | +49 7071 29-74886

Biblical-Archaeological Collection



The collection of the Biblical-Archaeological Institute was established in 1960 when the institute was founded. It includes about 430 objects, mainly ancient ceramic vessels (image), besides coins, seals, and models. The objects range from the Early Bronze Age (from 3500 BC) to Late Antiquity. Several showcases present the thematically arranged objects. Besides offering insight into the life of the Israelites of the 1st millennium B.C., the development of oil lamps is illustrated using examples. Only a small part of the collection is open to the public.

ADDRESS

Institute of Biblical Archaeology
Liebermeisterstraße 14, 72076 Tübingen

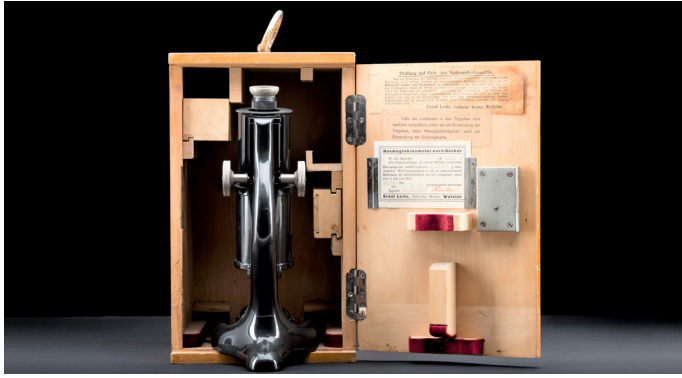
OPENING HOURS

On request

MANAGEMENT

Prof Dr Jens Kamlah
jens.kamlah@uni-tuebingen.de | +49 7071 29-72879

Biochemical Instrument Collection



The Biochemical Instrument Collection houses historical laboratory equipment from the former “physiological-chemical institute” (since 1885/86). Established in 1818 the “Castle Laboratory” is the world’s oldest biochemical laboratory. Among the preserved objects from its founding time are an iron retort, several digestion crucibles, and a beam scale. Special instruments for hemoglobin research date from the time of the physiological-chemical institute in Gmelinstrasse (1886–1964) (image). Most of the collection is housed in today’s Interfaculty Institute of Biochemistry; a selection of remarkable exhibits can be seen in the permanent exhibition “Tübingen Castle Laboratory – Cradle of Biochemistry” at Hohentübingen Castle.

ADDRESS

Interfaculty Institute of Biochemistry
Auf der Morgenstelle 34, 72076 Tübingen

OPENING HOURS

On request

MANAGEMENT

Dr Klaus Möschel
klaus.moeschel@uni-tuebingen.de | +49 7071 29-73341

Biochemical Preparation Collection



The Biochemical Preparation Collection of the former Tübingen “physiological-chemical institute” is located at today’s Interfaculty Institute for Biochemistry of the University of Tübingen IFIB. Part of it can be seen in the permanent exhibition “Tübingen Castle Laboratory – Cradle of Biochemistry” at Hohentübingen Castle. Most of the objects in the collection date from the period between 1886 and 1964, when the institute was housed in Gmelinstraße. There are more than 30 specimens that were created in the “Castle Laboratory” before 1886. Among them is a test tube inscribed by the physician and physiologist Friedrich Miescher (1844–1895) himself, the discoverer of nucleic acid, the substance of DNA and RNA. The test tube was prepared around 1871 and contains nuclein from salmon sperm.

ADDRESS

Interfaculty Institute of Biochemistry
Auf der Morgenstelle 34, 72076 Tübingen

OPENING HOURS

On request

MANAGEMENT

Dr Klaus Möschel
klaus.moeschel@uni-tuebingen.de | +49 7071 29-73341

Folded Book Collection Heidtmann



The Folded Book Collection Heidtmann of the Museum of the University of Tübingen MUT consists of a few specimens of Folded Book Art. In this special field, the books themselves become autonomous aesthetic objects with no practical use by artfully altering their pages through folding. In most cases, these folds relate to the contents of the books, which become sculptures in their own right. This creates exciting interactions between former function and new form. As a passionate artist, the retired Berlin library scientist Prof. Dr. Frank Heidtmann (1937–2023) transformed his research object into book art. Folding utility books such as catalogs, encyclopedias, thick commentaries, and novels into book objects results in a completely different view of the medium, which now presents itself in a new aesthetic appearance. This collection can also be found in the MUT's eMuseum.

ADDRESS

Museum of the Universität of Tübingen MUT | Administrative Office (Pfleghof)
Schulberg 2, 72070 Tübingen

OPENING HOURS

On request

CONTACT PERSON

Dr Edgar Bierende
edgar.bierende@uni-tuebingen.de | +49 7071 29-77481

Photo Collection of the Institute of Art History



Since the 1920s, the largest part of the photo collection has been the archive of the Tübingen art historian and professor Georg Weise (1888–1978). In terms of content, it is particularly associated with his research interests in Spanish and French medieval architecture and sculpture, but also includes photographs on the regional art history of Swabia. In addition, the collection contains old photographs of hand drawings and paintings by old masters from the former possession of the Königliches Kupferstichkabinett Stuttgart (royal copper engraving cabinet) and from individual private foundations.

ADDRESS

Prints and Drawings Collection | University Library | Bonatzbau
Wilhelmstraße 32, 72074 Tübingen

OPENING HOURS

On request

CURATOR

Dr Ariane Koller
graphische.sammlung@uni-tuebingen.de | +49 7071 29-77058

Kölle Collection of Paintings



The Kölle Collection of Paintings consists of the legacy of Christoph Friedrich Karl von Kölle (1781–1848), a Württemberg diplomat, writer, and political scientist born in Stuttgart. During his stays in Rome and Paris, he collected more than 50 paintings from the fifteenth to the nineteenth century. After King Wilhelm I of Württemberg refused a purchase, the collector bequeathed his paintings in 1848 to the University of Tübingen, where he had initially studied and taught as a private lecturer.

It is the only surviving evidence of private collecting in Württemberg in the nineteenth century, which is why the Kölle Collection of Paintings is protected as an independent group of monuments. A tondo (circular painting) by Lucas Cranach the Elder is on permanent loan to the Staatsgalerie Stuttgart (image).

ADDRESS

Eberhard Karls University of Tübingen | New Assembly Hall (Neue Aula)
Geschwister-Scholl-Platz, 72074 Tübingen

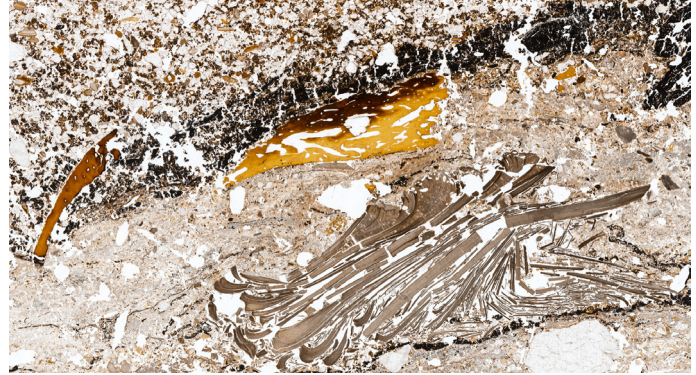
OPENING HOURS

On request

CURATOR

Dr Ariane Koller
graphische.sammlung@uni-tuebingen.de | +49 7071 29-77058

Geoarchaeological Collection



The Geoarchaeological Collection is based on a donation from a US-American professor, Paul Goldberg (*1945), who collected sediment samples over decades. The collection contains more than 7,000 objects, including thin sections, resin-bound sediment block samples, and sediment casts from archaeological strata and profiles. This makes the collection one of the largest of its kind in the world. The material comes from all inhabited continents and from almost all time periods. Complementing the archaeological objects, the collection contains a large number of recent sedimentary references. Since many of the original sites and profiles no longer exist or can no longer be accessed, the collection represents an invaluable resource for the study of the human past and the evolution of our species.

ADDRESS

Institute for Archaeological Sciences | Working group: Geoarchaeology
Rümeliinstrasse 23, 72070 Tübingen

OPENING HOURS

On request

MANAGEMENT

JProf Dr Christopher Miller
christopher.miller@uni-tuebingen.de | +49 7071 29-76511

Collection of Paintings of the University



This collection includes works by old masters as well as contemporary paintings. The latter are also purchased, for instance, as part of the “Invited Artist” program. Among the special works, is the large, impressive painting by the Offenburg astronomical photographer and painter Julius Grimm (1842–1906) from 1895: “View of the Full Moon” (image). Currently the oil painting can be viewed in the Knights’ Hall of Hohentübingen Castle. In addition to its size, it is particularly impressive for its almost photorealistic painterly quality. Grimm produced his view of the moon with the help of three-dimensional models based on his own photographs. It is unclear how the large Tübingen version ended up in the possession of the University. What is known is that Tübingen geologist Wolf von Engelhardt (1910–2008), alerted by the caretaker, found the painting in the attic of the New Assembly Hall (Neue Aula) in 1986.

ADDRESS

In various places of the university
c/o Prints and Drawings Collection | University Library | Bonatzbau
Wilhelmstraße 32, 72074 Tübingen

OPENING HOURS

On request

CONTACT PERSON

Dr Ariane Koller
graphische.sammlung@uni-tuebingen.de | +49 7071 29-77058

Geographical Map Collection



The Geographical Map Collection of the University of Tübingen contains current map sets as well as historical rarities of the nineteenth century. Part of the collection, which focuses on Southern Germany, was taken over from the Technical University of Stuttgart. The cultural, industrial, and ecological development of a landscape can be traced using old map material. Historical maps also document the respective state of the science of land surveying and are therefore important cultural records. Further parts of the Geographical Map Collection are the Wall Map Collection, the Aerial Photograph Collection, the Field Map Collection, the Atlas Collection, and the Atlas Archive. The holdings can be searched via the catalog of the Tübingen University Library.

ADDRESS

Soil Science & Geomorphology
Rümelinstraße 19–23 (Room H601), 72070 Tübingen

OPENING HOURS

On request

CURATOR

Dr Joachim Eberle
joachim.eberle@uni-tuebingen.de | +49 7071 29-73943

Glass Slide Collection of the Institute of Art History



The Historical Glass Slide Collection is affiliated with the Image Department of the Institute of Art History. The glass slides are kept in a separate room in the building of the Institute of Art History. The object stock is accessible on demand and by appointment.

In 2012, a digitization project for large-format slides was launched. By the end of 2014, 1,300 large-format slides had already been made available in a database. The online image database of the Tübingen Institute of Art History, into which the digitized glass slides – relating to the field of architecture – were entered is not publicly accessible. Access is only possible for students of art history and for teachers of the Institute of Art History.

ADDRESS

Institute of Art History
Bursagasse 1 (left staircase, 1st floor)
72070 Tübingen

OPENING HOURS

On request

COLLECTION COMMISSIONER

Eva-Maria Hamm
bildstelle@khi.uni-tuebingen.de | +49 7071 29-78556

Halm-Archive



As a scholar, music writer, teacher, and composer, August Halm (1869–1929) influenced the musical life in Württemberg, Bavaria, and at the Free School Community of Wickersdorf in Thuringia. During his studies, Halm spent time in Munich with Josef Rheinberger and in Tübingen during the tenure of the University Music Director Emil Kauffmann. As a composer, he was initially influenced by Anton Bruckner and Hugo Wolf. Later, he adopted forms and techniques from the Baroque era. The Halm-Archive at the Institute of Musicology, University of Tübingen contains manuscripts and prints of August Halm's compositions in manuscripts and prints, as well as letters, books, recordings of individual works, and files from the former August Halm Society.

ADDRESS

Institute of Musicology (Pfleghof)
Schulberg 2, 72070 Tübingen

OPENING HOURS

On request

COLLECTION COMMISSIONER

Prof Dr Thomas Schipperges
musik@uni-tuebingen.de | +49 7071 29-72414

Herbarium Tubingense



Collecting plants has a long history in Tübingen. Plant material from several centuries and from all over the world is kept in the Herbarium Tubingense, founded by Hugo v. Mohl (1805–1872) in 1837. Currently, there are about 500,000 plant specimens and botanical objects. In addition to flowering plants, these include fungi, algae, ferns, mosses, and lichens. The herbarium consists of a main collection and special collections such as the famous fruit and seed collection of Joseph Gärtner (1732–1791) or the former monastery herbarium of Beuron. The Herbarium Tubingense is part of the education in the field of biology as well as a research infrastructure. Herbaria are not only archives of biological diversity and systematics, they also provide information on climate change, other environmental changes, and the spread of rare and invasive species. Since 2020, the herbarium’s specimens have been digitized and published in the online database “JACQ-Virtual Herbaria”.

ADDRESS

Institute of Evolution & Ecology (EvE)
Auf der Morgenstelle 5, 72076 Tübingen

OPENING HOURS

On request

MANAGEMENT

Prof Dr Oliver Bossdorf
oliver.bossdorf@uni-tuebingen.de | +49 7071 29-78809
Dr Uta Grünert
uta.gruenert@uni-tuebingen.de | +49 7071 29-76943

Coin Collection of Islamic Numismatics



The founder of Swabian folklore Ernst Meier (1813–1866), Tübingen professor of oriental languages, collected Arabic coins, which were purchased by the University after his death. Through the acquisition of the Stephen Album collection in 1988, numerous donations and the founding of the “Research Center for Islamic Numismatics Tübingen”, this basic stock became one of the world’s largest and most important collections of Islamic coins of the Middle Ages and early modern period. Around 90,000 coinages, more than 3,000 of them in gold (image), from the area from Spain to Afghanistan offer an archive of the history of rulers, religion, and economy. Together with the coin collection of Classical Archaeology, the coin collection of the University of Tübingen forms the highest quality and most extensive university coin collection in Germany.

ADDRESS

Research Center for Islamic Numismatics Tübingen (FINT) |
Department of Oriental and Islamic Studies
Wilhelmstraße 113, 72074 Tübingen

OPENING HOURS

On request

CURATOR

Dr Sebastian Hanstein
sebastian.hanstein@uni-tuebingen.de | +49 7071 29-75208

Osteological Collection



The object inventory serves primarily as a research collection but is also used for teaching. In addition to an extensive collection of human fossil casts, it also includes the skeletal remains of about 11,000 individuals from the Paleolithic to the beginning of the twentieth century, mainly from Baden-Württemberg. Rare pieces include finds such as the Stone Age skull nest from the Hohlenstein-Stadel (photo), the spout of a plague corpse from the church of St. Dionysius in Esslingen dating between 1275 and 1550, and several Egyptian mummies. A small exhibition of objects from the fields of anatomy and disease-related changes in bones serves the education of students. Currently, the holdings of the collection are being digitized with the help of 3D scanners and CT scans, as well as researched for their provenance.

ADDRESS

Institute for Archaeological Sciences | Work group: Palaeoanthropology
Rümelinstraße 23, 72070 Tübingen

OPENING HOURS

On request

CURATOR

Dr Hannes Rathmann
hannes.rathmann@uni-tuebingen.de | +49 7071 29-76514

Pathology Collection



General pathology was taught in Tübingen by Professor Oskar E. Schüppel (1837–1881) since 1867. An independent institute was established in 1874. Pathology is of central importance for the indirect care of patients, which is why it is an essential part of clinical medicine. Tissue structures can be visualized with the aid of various staining techniques. Together with special molecular pathology methods, diseases can be diagnosed. This allows predictive statements that help to carry out a therapy tailored to the patient's needs. The Pathology Collection of the University of Tübingen consists of almost 40 specimens fixed in formalin. They date from 1950 to 1980 and mainly show malformations of fetuses and uteri.

ADDRESS

Institute of Pathology and Neuropathology | Department of General Pathology and Pathology
Liebermeisterstraße 8, 72076 Tübingen

OPENING HOURS

On request

MANAGEMENT

Prof Dr Falko Fend
falko.fend@med.uni-tuebingen.de | +49 7071 29-82266

Physics Collection



The Physical Institute emerged from the “physics cabinet”, which had been located at Hohentübingen Castle since 1851. In 1885, the institute moved to a separate building in Gmelinstraße; today it is located on Morgenstelle. Since its beginnings, the Physics Department has had a collection of devices. Today, it also includes historical apparatuses, such as measuring instruments, polarization apparatuses, and diffraction gratings. Among them is an electrostatic potential multiplier after Albert Einstein (1879–1955) from 1910, which was acquired by the then director of the institute, Fritz Paschen (1865–1947) around 1920. In addition, there is an exchange of letters between the jurist and Old Germanist Felix Genzmer (1878–1959) and Albert Einstein, as well as a peculiar tin cat with an attached miniature bicycle. This “sociable object” was used in a student examination ritual and played a role in the “integration of expert teams” until the early 1980s.

ADDRESS

Physical Institute
Auf der Morgenstelle 14, 72076 Tübingen

OPENING HOURS

On request

CURATOR

Dr Günter Lang
guenter.lang@uni-tuebingen.de | +49 7071 29-72426

Portrait Collection Goldberg



In 1906, the Berlin industrialist and art patron Adolph Goldberg (d. 1925) published hundreds of images of figures related to the flute—from Pan to Theobald Böhm—which he had gathered from various sources. He had them printed on panels and distributed under the title “Portrait Collection of Outstanding Flute Virtuosos, Amateurs, and Composers”. Only nine of these collections are known to exist worldwide. The Tübingen collection, originally from the possession of the instrument collector Josef Zimmermann (1881–1976), was acquired by Karl Ventzke (1933–2005) and then donated to the University along with the wind instrument collection. A volume with biographies and an index accompanies the images; this has also been preserved in the Tübingen collection.

ADDRESS

Institute of Musicology (Pfleghof)
Schulberg 2, 72070 Tübingen

OPENING HOURS

On request

COLLECTION COMMISSIONER

Prof Dr Thomas Schipperges
musik@uni-tuebingen.de | +49 7071 29-72414

Professors' Gallery



The Professors' Gallery of the University of Tübingen is by far the most extensive at a German university. It includes over 300 portraits of former rectors, chancellors, professors (image: Wilhelm Schickard (1592–1635)), and other officials of the University of Tübingen. The oldest paintings of the collection were created in the sixteenth century. Even today, the university upholds the tradition of commissioning portraits of the rectors. Due to its chronological coherence and its value for the history of science, this collection is under state monument protection.

The Professors' gallery is decentralized and located in various University buildings. Larger parts can be seen in the Small and Large Senates of the New Assembly Hall (Neue Aula) and a smaller selection in the so called Fürstenzimmer of Hohentübingen Castle. The majority of this collection is displayed in the eMuseum of the MUT.

ADDRESS

At various locations of the university
c/o Prints and Drawings Collection | University Library (Bonatzbau)
Wilhelmstraße 32, 72074 Tübingen

OPENING HOURS

On request

CURATOR

Dr Ariane Koller
graphische.sammlung@uni-tuebingen.de | +49 7071 29-77058

Collection of the Center for Media Competence



The Collection of the Center for Media Competence (Zentrum für Medienkompetenz, ZFM), located in the University's Brechtbau, contains technical artifacts of media-historical significance. Primarily from the fields of film, television, and radio, this collection includes old devices mainly from the 1950s to the 2000s. It features cameras, turntables, radios, recorders, and tape machines, highlighting the rapid development of technological innovations over time.

ADDRESS

Center for Media Competence (Brechtbau)
Wilhelmstraße 50, 72074 Tübingen

OPENING HOURS

On request

CONTACT PERSON

PD Dr Ulrich Hägele
ulrich.haegle@uni-tuebingen.de | +49 7071 29-78443

Collection for Ethics and History of Medicine



The Institute for the History of Medicine was established in 1961 and later merged with the Chair for Ethics in Medicine to form the Institute for Ethics and History of Medicine. It received a variety of donations from professors, clinics, and institutes in Tübingen, including a disturbing collection compiled by Hans Fleischhacker (1912–1992) in 1943 for his Tübingen habilitation thesis. It consists of more than 600 hand-, foot-, and fingerprints of mostly Jewish inmates of the Litzmannstadt (Łódź) ghetto, Poland. Fleischhacker, a racial biologist and SS-Obersturmführer, wanted to use these holdings to prove imputed morphological differences between the palms of Jews and non-Jews. It is the only collection of its kind. Today, it offers us with authentic insights into the bizarre interplay between ideology and science during the time of National Socialism.

ADDRESS

Institute for Ethics and History of Medicine | Section History of Medicine
Goethestraße 6, 72076 Tübingen

OPENING HOURS

On request

COLLECTION COMMISSIONER

Prof Dr Henning Tümmers

henning.tuemmers@uni-tuebingen.de | +49 7071 29-75216

Gärtner Collection at the Herbarium Tubingense



The “Gärtner Collection” comprises two scientific bequests. It was donated to the university by Emma Gärtner (1818–1875), daughter of the botanist Carl Friedrich Gärtner (1772–1850), on January 9, 1860. It contains a carpological collection of about 600 fruits and seeds, mostly preserved in coverslips, the majority of which are from Joseph Gärtner (1732–1791). Among them are a number of type specimens that still serve as irreplaceable evidence for international research. Another part of the collection goes back to Carl Friedrich Gärtner: A convolute containing bastard plants.

ADDRESS

Herbarium Tubingense | Institute of Evolution & Ecology
Auf der Morgenstelle 5, 72076 Tübingen

OPENING HOURS

On request

LEADERSHIP

Prof Dr Oliver Bossdorf

oliver.bossdorf@uni-tuebingen.de | +49 7071 29-78809

Dr Uta Grünert

uta.gruenert@uni-tuebingen.de | +49 7071 29-78812

Vinyl Record Collection of the Institute of Musicology



The record collection of the Institute of Musicology consists of: the Dr. Andreas Fallscheer-Schlegel Foundation from Reutlingen with about 500 records (2015/16), the record collection of the University of Church Music in Tübingen with about 3,150 records (2018), the SWR donation with about 15,000 records (2019), and the donation from Horst Exner (2024, with support from the Universitätsbund Tübingen). Additional donations, as well as an internal collection established since the founding of the institute, complement the collection with around 1,000 audio recordings. All the records feature performances of European art music, spanning from 1950 to the mid-1980s when records were replaced by CDs. The collection, along with a separate extensive record collection of the university library, serves research purposes. One area of interest, for example, is the study of the design and texts on the record sleeves.

ADDRESS

Institute of Musicology (Pfleghof)
Schulberg 2, 72070 Tübingen

OPENING HOURS

On request

MANAGEMENT

Prof Dr Thomas Schipperges
musik@uni-tuebingen.de | +49 7071 29-72414

Swabian State Music Archive



The Swabian State Music Archive at the Institute of Musicology comprises about 32 closed collections from parishes and former monasteries of today's Württemberg and Upper Swabia, an important treasure of historical music records from the eighteenth and nineteenth centuries. It was founded in 1935 by Tübingen University Music Director Ernst Fritz Schmid (1904–1960). Works by approximately 770 composers can be found here, including representatives of Upper Swabian monastic music. The collection as a whole reflects a coherent picture of the Swabian and South German musical heritage and offers numerous discoveries in detail, including several cantatas by Georg Eberhard Duntz (1705–1775), who worked in Stuttgart as a chapel boy, violinist and chamber musician, as well as mass compositions by the Mannheim court cellist Anton Filz (1733–1760). Parts of the collection can be found in the digital RISM catalog.

ADDRESS

Institute of Musicology (Pfleghof)
Schulberg 2, 72070 Tübingen

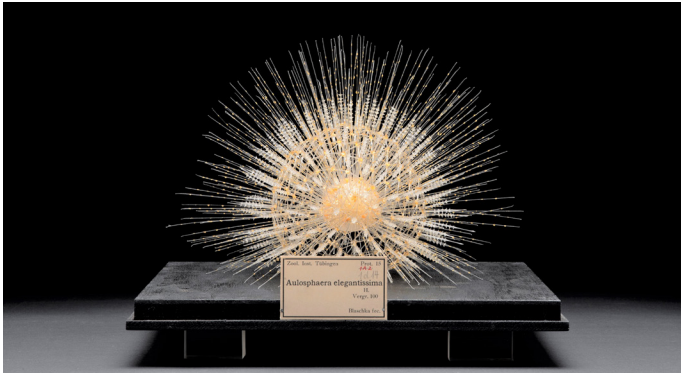
OPENING HOURS

On request

MANAGEMENT

Prof Dr Thomas Schipperges
musik@uni-tuebingen.de | +49 7071 29-72414

Zoological Collection



A large part of the collection is kept at Morgenstelle, but the display collection, which is open to the public, is kept at Sigwartstrasse in the Campus Valley. Vertebrates and insects of Central Europe are exhibited on the upper floor. Exotic animals from Africa, Asia, Australia, and America are on display on the first floor. The collection has its origins – like many others – in a natural history cabinet, which was housed at Hohentübingen Castle from 1802. The oldest specimens were donated by the Württemberg royal family. Many of the animals on display are either extinct or threatened with extinction. A special feature is the not yet accessible oder so far inaccessible collection of 32 glass models of marine invertebrates (image above) made by the glassblowers Leopold (1822–1895) and Rudolph Blaschka (1857–1939).

ADDRESS

Institute of Evolution and Ecology (EvE) | Comparative Zoology
Sigwartstraße 3, 72076 Tübingen

OPENING HOURS

On request

CURATOR

Dr Erich Weber

erich.weber@uni-tuebingen.de | +49 7071 29-72668



Astrophysical Collection



The collection of the Institute of Astronomy and Astrophysics, founded in 1964 as the Chair of Theoretical Astrophysics, includes the first cast-iron quadrant, which was acquired by Jacques Cassini (1677–1756) in 1752 for the observatory of Hohentübingen Castle. Other instruments in the collection include a portable transit instrument and a parallactically mounted telescope, acquired a hundred years later, which made it possible to take considerably more precise measurements. Instruments built at the institute, beginning in the mid-1960s, bear witness to more recent scientific activities. These unique instruments, including an Aries space mirror, were developed, built, and used for space-based telescopes. They made it possible to observe radiation from cosmic objects that cannot be measured from the ground. The only space telescope that has left Earth twice and returned safely is the highlight of the collection (image).

ADDRESS

Institute of Astronomy and Astrophysics | Department of Astronomy and HEA
Sand 1, 72076 Tübingen

OPENING HOURS

It is currently not possible to view the collection.

COLLECTION COMMISSIONER

Dipl. Phys. Thomas Schanz
schanz@astro.uni-tuebingen.de | +49 7071 29-75473

Collections not Open to the Public



Drill Core Collection



The newly constructed building of the Geo and Environmental Center at Morgenstelle, built between 2015 and 2018, is home to a high-quality repository. Parts of the Mineralogical Collection as well as a collection of drill and sediment cores are stored in it. They are kept on a floor space of about 250 m². In Tübingen, geology research has been carried out with the help of drill cores for many decades. As early as 1920, a 92.9-meter-long drill core from the Lengetal II borehole near Geislingen went to the Tübingen collection (Fossil index, catalog no.: 18822). Today, the Drill Core Collection comprises cores of about 3.5 kilometers in length; of these, more than two-thirds are marine cores.

ADRESSE

Department of Geoscience
Schnarrenbergstraße 94–96, 72076 Tübingen

OPENING HOURS

It is currently not possible to view the collection.

COLLECTION COMMISSIONER

Dr Hartmut Schulz
hartmut.schulz@uni-tuebingen.de | +49 7071 29-72496

History of Science Collection



The History of Science Collection was created primarily thanks to the commitment of the Tübingen biologist PD Dr. Alfons Renz (*1949) and consists of about 300 technical devices and instruments of scientific historical significance. Primarily from the subjects of chemistry (image) and physics, but also from the Hygiene Institute, the Eye Clinic, and other disciplines. They bear witness to the material culture of various scientific disciplines in general and the contribution of Tübingen researchers in particular. The oldest apparatuses, often built by Tübingen University mechanics, date back to the nineteenth century. Furthermore, the collection includes teaching resources, microscopic specimens, and related documents. A large number of objects from different scientific collections are recorded in the eMuseum of the MUT.

ADDRESS

Museum of the University of Tübingen MUT | Depot
Sand 5, 72076 Tübingen

OPENING HOURS

It is currently not possible to view the collection.

CONTACT PERSON

Dr Edgar Bierende
edgar.bierende@uni-tuebingen.de | +49 7071 29-77481

Historical Furniture Collection



The Historical Furniture Collection contains ensembles and individual pieces from different contexts and eras, kept in various locations at the university. These include, for example, the furnishings of the so-called “Rector’s Room” in the New Assembly Hall (Neue Aula). Its furniture originally came from the crown estate of the kings of Württemberg and was purchased by the University from Ludwigsburg Palace around the middle of the nineteenth century. The two throne chairs (image) are undoubtedly among the highlights of the furniture in terms of University history. They were reserved for the kings of Württemberg and their spouses and used to stand under a canopy in the former ballroom of the New Assembly Hall. In 2021, they were restored and placed in the University’s Small Senate.

ADDRESS

Museum of the University of Tübingen MUT | Administrative Office (Pfleghof)
Schulberg 2, 72070 Tübingen

OPENING HOURS

It is currently not possible to view the collection.

CONTACT PERSON

Dr Edgar Bierende
edgar.bierende@uni-tuebingen.de | +49 7071 29-77481

Human Physiology Collection



The Physiological Institute in Tübingen was founded in 1853. Previously, this discipline was part of anatomy. From the outset, the Institute received 400 guilders a year to build up a collection of apparatuses for teaching and research purposes. In addition to a historical collection of apparatuses in the institute and individual objects in the History of Science Collection (image), which date from various eras, a closed collection of photographs on microscopy from the 1980s has been preserved and is now kept in the University Archives.

ADDRESS

Institute of Physiology | Department of Vegetative and Clinical Physiology
Wilhelmstraße 56, 72074 Tübingen

OPENING HOURS

It is currently not possible to view the collection. Access can be provided upon justified request.

MANAGEMENT

Prof Dr Thomas Wieder
thomas.wieder@med.uni-tuebingen.de | +49 7071 29-78250 (secretariat)

Printing Plate Collection



The Printing Plate Collection consists mainly of metal printing plates etched in zinc and aluminium. They date from several eras and were produced for printing various publications and journals of the University. The University Magazine “Attemp-to!” originally used this technique, as did older formats, such as the “Tübingen University Newspaper: Information and Reports”, which was launched in 1980. Printing plates were used in such and other publications, for example depicting the city map of Tübingen (image).

ADDRESS

Museum of the University of Tübingen MUT | Administrative Office (Pfleghof)
Schulberg 2, 72070 Tübingen

OPENING HOURS

It is currently not possible to view the collection.

CONTACT PERSON

Dr Edgar Bierende
edgar.biernde@uni-tuebingen.de | +49 7071 29-77481

Mathematical Instrument Collection



The Mathematical Institute owns a collection of devices and instruments with a focus on the nineteenth and the first half of the twentieth century, which were used for practical exercises in geodesy, descriptive geometry and in graphical and numerical methods. These include theodolites (image), measuring rods, special drawing instruments, integrimeters, and mechanical calculators. In addition, the collection contains some rare, older objects from the Tübingen Observatory, which date back to the eighteenth century. Until around 1960, practical exercises in geodesy – also in the field – and descriptive geometry were a compulsory part of the curriculum for teachers majoring in mathematics.

ADDRESS

Department of Mathematics
Auf der Morgenstelle 10 (Gebäude C), 72076 Tübingen

OPENING HOURS

It is currently not possible to view the collection.

MANAGEMENT

Prof Dr Frank Loose
frank.loose@uni-tuebingen.de | +49 7071 29-72898

Medical History Instrument Collection



The Medical History Instrument Collection consists of two sub-collections. The first is a collection from the practice of the physician Dr. Georg Kolb, who practiced in the districts of Tübingen and Reutlingen from 1934 to 1964. Among other things, an approximately 70-year-old leather doctor's bag contains dozens of historical medical instruments from the twentieth century. These metal instruments were mainly used for minor surgical procedures. Also among them are everyday utensils of a rural doctor's office that did not specialize in any particular field. Special tools, such as trepanation instruments (image: trepanation drill), enrich the collection.

The medical items of the general practitioner and former chairman of the Association of Statutory Health Insurance Physicians, Dr Jörg G. Vogel, who studied in Tübingen in the 1960s, represent an independent and at the same time complementary collection.

ADDRESS

Museum of the University of Tübingen MUT | Depot Sand 5, 72076 Tübingen

OPENING HOURS

It is currently not possible to view the collection.

CONTACT PERSON

Dr Edgar Bierende
edgar.bierende@uni-tuebingen.de | +49 7071 29-77481

Medical-Technological Collection



The collection of the Medical Technical Service Center holds various historical apparatuses that were used in the University Hospital in the 1950s and 1960s. The focus is on laboratory equipment, Electrocardiogram recorders (image), defibrillators, blood glucose meters, and equipment used in infusion technology.

ADDRESS

University Hospital Tübingen | Medical Technology Service Center Otfried-Müller-Straße 4, 72076 Tübingen

OPENING HOURS

It is currently not possible to view the collection.

MANAGEMENT

N. N.

Moulage Collection



The University Dermatological Clinic in Tübingen houses its own moulage collection. In 1905, the young dermatologist and later professor and founder of the Tübingen Dermatological Clinic, Paul Linser (1871–1963), used moulages to train prospective physicians. Many generations of physicians were trained and examined on such wax models. Most of the moulages were wax casts and replicas of diseased or malformed skin areas and genitalia, which were recreated in a lifelike manner. The current collection of 280 moulages consists of two individual collections: a dermatological one from the University Dermatological Clinic and a tropical medical one from the German Institute for Medical Mission. Outstanding objects are the replicas of terminal diseases that have become rare today, such as lupus and syphilis (image), plague and smallpox. A selection of objects can be found in the eMuseum of the MUT.

ADDRESS

University Dermatology Clinic
Liebermeisterstraße 25, 72076 Tübingen

OPENING HOURS

It is currently not possible to view the collection.

MANAGEMENT

Apl Prof Dr Anke Strölin
anke.stroelin@med.uni-tuebingen.de | +49 7071 29-85763

Neonatological Collection



For centuries, children were treated as “small adults” before a well-founded pediatric medicine developed around 120 years ago. However, it was not until the second half of the twentieth century that neonatology, which deals with the treatment of premature and sick newborns, gained momentum. The introduction of certain techniques and technologies in conjunction with suitable equipment and instruments helped to significantly improve the chances and the quality of survival. Whereas in 1960, 95 percent of all infants with a birth weight below 1,000 grams died, today at least 95 percent of these infants survive. The collection exists since 2001; it documents the development of neonatology by means of equipment (image) and instruments from the late 1960s to the present day.

ADDRESS

Lothar-Meyer-Bau
Wilhelmstraße 56, 72074 Tübingen

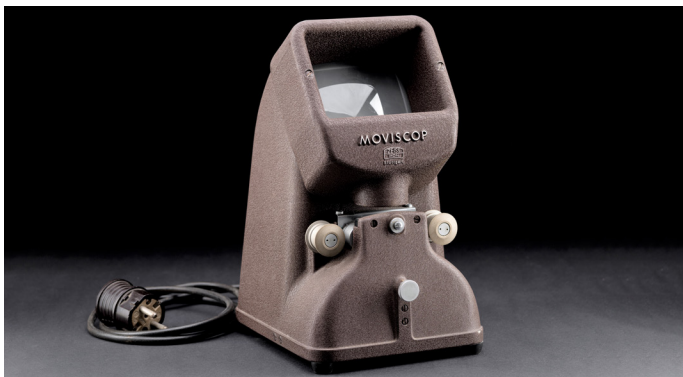
OPENING HOURS

It is currently not possible to view the collection.

CONTACT PERSON

Dr Wolfgang Buchenau
wolfgang.buchenau@med.uni-tuebingen.de

Pharmacological Collection



In 1907, the University of Tübingen appointed Carl Jacoby (1857–1944) as the first professor of pharmacology at the newly founded institute in Tübingen. The Pharmacological Collection, which has been built up since then, includes not only apparatuses (image) but also various chemicals and pharmaceuticals from different manufacturers, such as Abbot, Asta Werke, Bayer, Böhringer & Söhne, Hoffmann La Roche, Höchst, Knoll AG, Merck, Nordmark Werke, and the “University Pharmacy”. One early object dates back to 1920, “Ergot from Württemberg”, and another, an arrow or spear with a tip soaked in curare, to colonial times. The collection was packaged in 2019 and has been in storage since then.

ADDRESS

Pharmacogenomics | Lothar-Meyer-Bau
Wilhelmstraße 56, 72074 Tübingen

OPENING HOURS

It is currently not possible to view the collection.

MANAGEMENT

Prof Dr Melanie Philipp
melanie.philipp@uni-tuebingen.de | +49 7071 29-72271

Collection of Inorganic Chemistry



The collection of experimental preparation of inorganic chemistry consists mostly of objects used by Wilhelm Johann Schlenk (1879–1943).

Schlenk was a German chemist who taught at the University of Tübingen from 1935. The objects kept in the collection are strongly influenced by the so-called “Schlenk technique” developed by Schlenk himself. It characterizes a chemical working method with which substances sensitive to air or moisture can be processed in the absence of atmospheric oxygen and humidity. Some old Schlenk vessels containing substances were found during remodeling work. In addition, the experimental preparation of inorganic chemistry has an extensive collection of chemicals stored in historical glass bottles.

ADDRESS

Institute of Inorganic Chemistry
Auf der Morgenstelle 18, 72076 Tübingen

OPENING HOURS

It is currently not possible to view the collection.

COLLECTION COMMISSIONER

N. N.

Women's Clinic Collection



The Collection of the University Women's Clinic dates back to the time of Johann Heinrich Ferdinand Autenrieth (1772–1835). He is considered the founder of the University Hospital and was an important initiator of gynecology and obstetrics in Württemberg in the nineteenth century. The collection contains various wet specimens, diverse models and instruments, the majority of which date from the twentieth century. Among the special pieces is a wooden birthing chair with embossed leather upholstery from the beginning of the nineteenth century (image), which is on permanent loan to the Haus der Geschichte Baden-Württemberg in Stuttgart.

ADDRESS

University Women's Clinic Tübingen
Calwerstraße 7, 72076 Tübingen

OPENING HOURS

It is currently not possible to view the collection.

MANAGEMENT

Prof Dr Diethelm Wallwiener
diethelm.wallwiener@med.uni-tuebingen.de | +49 7071 29-82246

Halbritter Collection



In 2009, the MUT acquired clay models and casting molds from the estate of Gerhard Richard Halbritter (1908–2002), a sculptor, draftsman, and graphic artist from Tübingen who was born in Mühlhausen/Thuringia. It is a selection of designs or models of portrait reliefs (image) of representatives of the University of Tübingen. The collection also includes original negatives of faculty plaques and university medals by the artist's hand. Halbritter became known primarily for the death masks he made of Ernst Bloch (1885–1977) or the members of the Red Army Faction (RAF) Gudrun Ensslin (1940–1977), Andreas Baader (1943–1977) and Jan-Carl Raspe (1944–1977).

ADDRESS

Museum of the University of Tübingen MUT | Depot
Sand 5, 72076 Tübingen

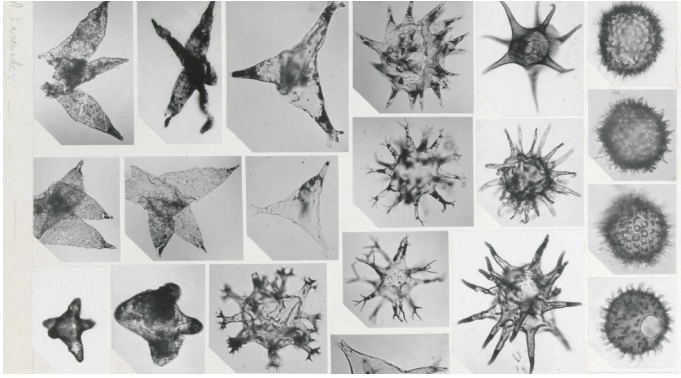
OPENING HOURS

It is currently not possible to view the collection.

CONTACT PERSON

Dr Edgar Bierende
edgar.bierende@uni-tuebingen.de | +49 7071 29-77481

Micropaleontology Collection



An extensive collection on micropaleontology was established in the Department of Geosciences. It is assigned to the Paleontological Collection. Especially sediment samples collected by drilling contain fossil microorganisms. Such often unicellular microorganisms (image) are of great importance for stratigraphic and taxonomic research as well as for environmental and climatic questions of geological history. Since the 1950s, renowned micropaleontologists, such as Alfred Eisenack (1891–1982) and Hans Gocht (1930–2014), conducted research and taught in Tübingen. In 1976, the collection already included 11,500 specimens. Since 1983, the institute has published the monographic series “Tübingen Micropaleontological Notices”. Currently, several scientists from Tübingen are working in this field.

ADDRESS

Department of Geosciences
Sigwartstraße 10, 72076 Tübingen

OPENING HOURS

It is currently not possible to view the collection.

CURATOR

PD Dr Ingmar Werneburg
ingmar.werneburg@uni-tuebingen.de | +49 7071 29-73068

Pelling-Zarnitz Collection



The Tübingen couple Claus Pelling and Marie Luise Zarnitz collected art and cultural objects from various regions of the world over many decades. They also gathered objects from ancient American cultures, with a certain focus on the Maya culture. Partly as a donation and partly as a legacy, a group of objects from the private collection was given to the University of Tübingen in 2024, providing an outstanding and independent addition to the already existing Ethnological Collection.

ADDRESS

Eberhard Karls University of Tübingen | New Assembly Hall (Neue Aula)
Geschwister-Scholl-Platz, 72074 Tübingen

OPENING HOURS

It is currently not possible to view the collection.

CONTACT PERSON

Prof Dr Ernst Seidl
ernst.seidl@uni-tuebingen.de | +49 7071 29-74134

Sander Collection



The Sander Collection goes back to the Tübingen professor and biologist Evamarie Sander (1928–2023). She was the first female professor of the Faculty of Natural Sciences at the University of Tübingen. Her estate includes the inventory of a middle-class family, such as furniture and books, jewelry and silverware. Through these objects, the intellectual and cultural history of an academic and her family in Tübingen during the 20th century can be documented and understood in the context of time.

ADDRESS

Collections Center of the MUT
Wilhelmstraße 13–15, 72074 Tübingen

OPENING HOURS

It is currently not possible to view the collection.

CONTACT PERSON

Prof. Dr. Ernst Seidl
ernst.seidl@uni-tuebingen.de | +49 7071 29-74134
Lucas Rau M.Sc.
lucas.rau@uni-tuebingen.de | +49 7071 29-77311

Lessing and Schmalzriedt Collection



The Schmalzriedt Collection includes 95 Turkmen rugs from the nineteenth and early twentieth century. They come from the Turkmen tribes of the Yomud and Tekke. In addition to the carpets, the collection also includes bags, horse blankets, tent entrances, and long tent borders. The woven fabrics are of particular interest because of their ornamentation, which allows the individual pieces to be located very precisely both regionally and historically. The private collection of Professor Egidius Schmalzriedt (1935–2003) was donated to the university in 2010 from his estate.

A second private collection was donated to the university in 2018 by the couple Gotthold Ephraim and Johanna Lessing. It contains around 40 Turkmen carpets, the majority of which were acquired in the 1970s and 1980s. The textiles were probably produced in the nineteenth century.

ADDRESS

Museum of the University of Tübingen MUT | Depot
Sand 5, 72076 Tübingen

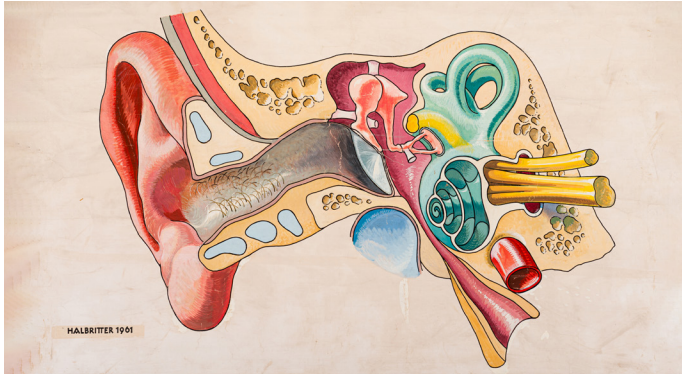
OPENING HOURS

It is currently not possible to view the collection.

CONTACT PERSON

Dr Edgar Bierende
edgar.bierende@uni-tuebingen.de | +49 7071 29-77481
Dr Lutz Ilisch
lutz.ilisch@uni-tuebingen.de

Chart Collection of the ENT Clinic



The Chart Collection of the Ear, Nose and Throat (ENT) Clinic in Tübingen comprises around 120 individual items. The majority of these charts are from the 1960s, but some of them are more than one hundred years old. Most of them are one-of-a-kind pieces that were manually produced by artists in collaboration with physicians. At the end of the design process the charts were signed and dated in a manner comparable to paintings. Among the scientific illustrators and graphic artists who created the boards of the ENT clinic are names such as Gerhard Halbritter (1908–2002), Karl-Heinz Seeber (1924–2005) and the Tübingen artist Theodor Baumann (1855–1932).

ADDRESS

University Hospital for Otorhinolaryngology
Elfriede-Aulhorn-Straße 5, 72076 Tübingen

OPENING HOURS

It is currently not possible to view the collection.

MANAGEMENT

Prof Dr Hubert Löwenheim
hubert.loewenheim@med.uni-tuebingen.de | +49 7071 29-88006

Silver Treasure of the University



The University of Tübingen's Silver Treasure includes center-pieces, ceremonial cups, the rector's chain and two scepters (image) of the university's founding faculties – the Faculty of Arts and the Faculty of Theology – from late medieval times, as well as the rector's baton from 1812. The objects are important testimonies to the University of Tübingen's representational practices. Over the centuries, additional pieces were donated on the occasion of anniversaries by the ruling family of Württemberg, wealthy private individuals or even former students. These include a lidded goblet (1915) of the Countess von der Linden, an aunt of the first female student at Tübingen University (1892–1895). The earliest record of donations is in the archives from the year 1550.

ADDRESS

Eberhard Karls University of Tübingen | New Assembly Hall (Neue Aula)
Geschwister-Scholl-Platz, 72074 Tübingen

OPENING HOURS

It is not possible to view the collection.

CURATOR

Dr Ariane Koller
ariane.koller@uni-tuebingen.de | +49 7071 29-77058

Dental Collection



The teaching collection of the University Hospital for Dentistry, Oral Medicine and Maxillofacial Surgery is located on the first floor of the clinic. The chair of dentistry has existed in Tübingen since 1910, where the first director Hermann Peckert (1876–1940) already founded the collection. In an award-winning project called DENTAL|THINGS, the collection was transformed into a museum. Objects from all fields of dentistry, including research and teaching, are presented as examples. Display boards explain the history of dentistry in general as well as specific to Tübingen in relation to the exhibits, which range from the sixteenth century to the present. The whimsical objects now appear scenographically restaged. An online exhibition on DENTAL|THINGS can be found on the MUT website:

<https://www.unimuseum.uni-tuebingen.de/de/ausstellungen/online-ausstellungen>

ADDRESS

University Hospital for Dentistry, Oral and Maxillofacial Surgery Tübingen
Osianderstraße 2–8, 72076 Tübingen

OPENING HOURS

It is not possible to view the collection (construction work).

CURATOR

Dr Andreas Prutscher
andreas.prutscher@med.uni-tuebingen.de | +49 7071 29-83461





Imprint

EDITOR

Prof. Dr. Ernst Seidl

Museum of the University of Tübingen MUT
Administrative office: Schulberg 2 | Pflegelhof
72070 Tübingen
www.unimuseum.de

DESIGN

Frank Dürr, Michael La Corte, Nele Morath

EDITORIAL ASSISTANCE

Edgar Bierende, Fabian Kurze, Lucas Rau, Ernst Seidl,
Elke Steinhauser, Ella Ujhelyi, Annika Vosseler, Simon Zauner

IMAGES

Valentin Marquardt, Juri Lipták, Peter Neumann,
Lars Krause, Thomas Zachmann, Hilde Jensen and others

ACKNOWLEDGEMENTS

We would like to thank the curators of the collections of the
University of Tübingen for the excellent collaboration.

EBERHARD KARLS
UNIVERSITÄT
TÜBINGEN



MUSEUM DER
UNIVERSITÄT
MUT

© 2012 Museum of the University of Tübingen MUT
4th, expanded and corrected edition 2024

Sponsors



The Audio Guide App of the Museum Ancient Cultures



Download the MUT app onto your
smartphone and use it offline in the museum.
Available for Android and IOS.

